

NITECORE®

EF1 EXPLOSION-PROOF FLASHLIGHT

- Designed for hazardous industries including land and marine petroleum exploitation, petrochemical and chemical industries
- Type II non-mine explosion-proof electrical appliance

(Mark: Ex d II C T5 Gb)





防爆合格证

CONFORMITY CERTIFICATE OF EXPLOSION-PROOF

证号: CB15.1175
Certificate No.

产品名称
Name of Product

防爆电筒

型号及规格
Type of Product

EF1

防爆标志
Marking

Ex d II CT5 Gb

技术文件
Technical Documents

Q/EX001-2014

图号
Drawing No.

EF1-00

备注
Note (s)

1. 电池参数: DC3.7V/2600mAh.
2. 光源种类及功率: LED 灯 10W.
3. 外壳防护等级: IP67.

经对上述产品图样及技术文件的审查和样品的检验, 其符合以下标准:

By verifying the drawings and technical documents and checking samples, the product complies with the following standards:

GB 3806.1-2000

GB 3806.2-2000

发
Issued to:

给: 广州希脉商贸有限公司

本证失效日期:
Date of Expiry:

2020-04-09

发证日期:
Date of Issue:

2015-04-09

中心印章
Center seal



中心主任
Director

刘红亮

石油和化学工业电气产品防爆质量监督检验中心
Supervision & Test Center of Ex-products of China Petroleum & Chemical Industry

注: 本证书只与送检样品一致的产品有效。

Note: This certificate is only valid for the products that are in accord with samples tested and verified.

中心地址: 中国天津宁河区汉沽街道 85 号

Center Add: No.85 No.1 Road Dingguo Street, Tianjin, China Post code: 300000

E-mail: pcec@pcec.com.cn

电话: 022-26641096

传真: 022-26641096

http://www.pcec.com.cn

NITECORE® EF1 EXPLOSION-PROOF FLASHLIGHT

Mark: **Ex d II CT5 Gb**

EF1 Explosion-proof flashlight is accredited by the Tianjin Supervision & Test Center of Ex-products of China Petroleum & Chemical Industry (PCEC).

PCEC is an electrical safety testing laboratory approved by the National Certification and Accreditation Regulatory Commission (CNAS) and the International Electro-technical Commission, and authorized by the Chinese Classification Society (CCS) and the Chinese Petroleum and Chemical Industry Association. PCEC has cooperation and mutual recognition with French Central Laboratory (LCIE), German Federal Institute of Physics and Technology (PTB), Russian Anti-Explosion and Mine Electrical Equipment Certification Center (CCVE), Norway Classification Society (DNV), German Technischer Überwachungs Verein (TUV), and United States FM Approvals. It is one of the International Electro-technical Commission IECEx Explosion-proof Electrical Testing laboratories.

NITECORE®

EFI EXPLOSION-PROOF FLASHLIGHT

There are approximately 4,000 types of gas and vapor that are inflammable and/or explosive in hazardous industries like land and marine petroleum exploitation, petrochemical industry and pharmaceutical industry, especially in their production, storage and transportation sections where complexity increases. EFI explosion-proof flashlight is designed to provide safe and uncompromised illumination for these industries.

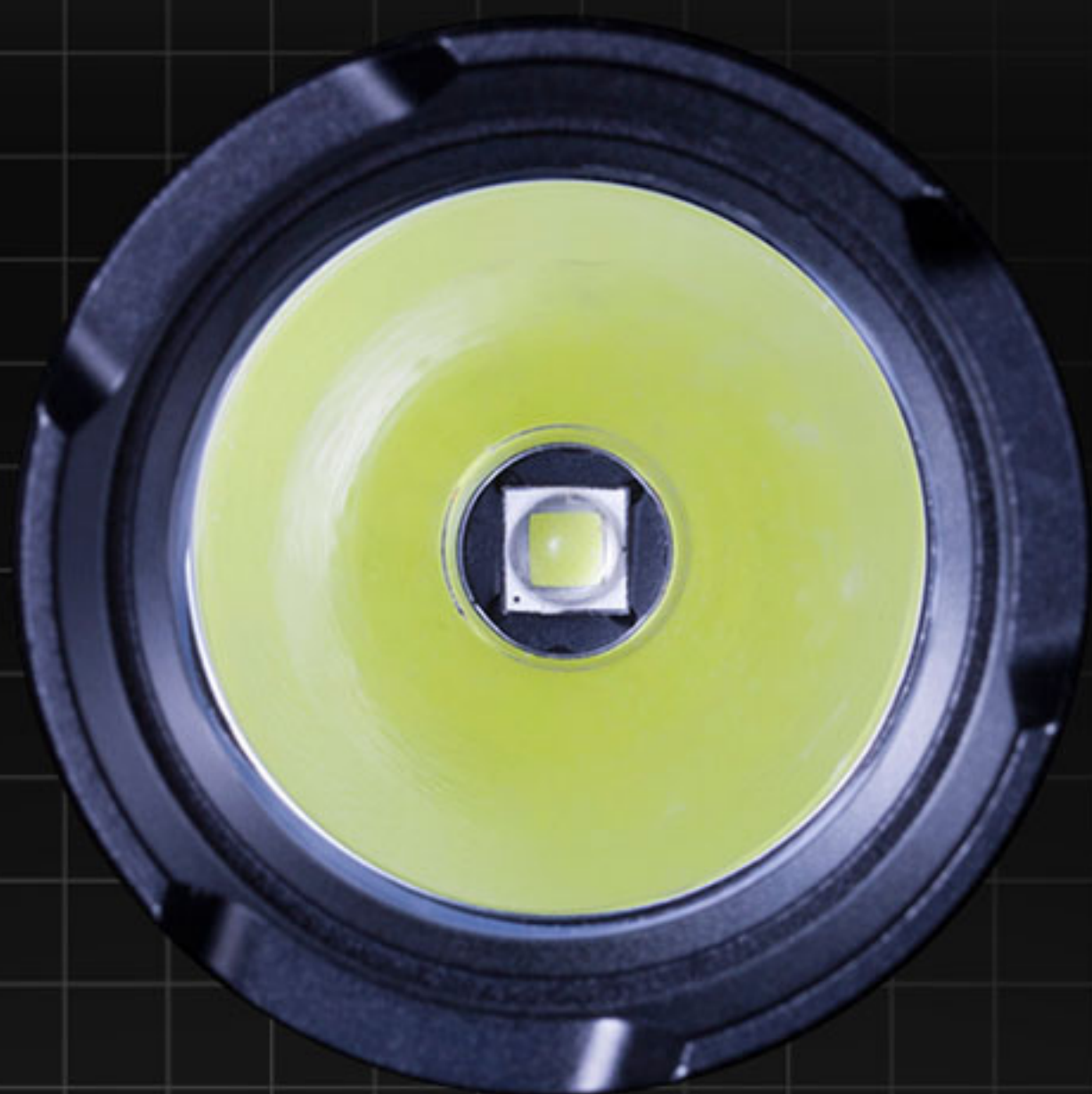




NITECORE®

EF1 EXPLOSION-PROOF FLASHLIGHT

EF1 explosion-proof flashlight introduces aerospace grade aluminum alloy to its body construction, and achieves a body thickness of **3mm** (**20%** thicker than ordinary flashlights). Together with the 10mm-thick epoxy resin explosion-suppressive optical lens, EF1 can provide secured illumination in hazardous areas (Zone 1, Zone 2, and Type IIA, IIB, IIC, and T1-T5 Levels, as GB3836 rated), and indoor/outdoor operations (such as factories, stations, stadiums, railway tunnels, culverts) for electricity, smelting, railway, mine, port and civil construction industries. EF1's explosion-proof class is IIC. Its Equipment Protection Level is Gb.



NITECORE®
EFI EXPLOSION-PROOF FLASHLIGHT

EFI utilizes a **CREE XM-L2 U3** LED

to boast a peak beam intensity of **830** lumens and

enables a maximum runtime up to **50,000** hours.

NITECORE®

EF1 EXPLOSION-PROOF FLASHLIGHT

Integrated "Precision Digital Optics Technology"
provides extreme reflector performance

Peak Beam Intensity

18,300_{cd}

Maximum Beam Distance

270_m





NITECORE®
EF1

Explosion-proof Flashlight

Ex d IIC T5 Gb

Serial No:20150721061

Certificate No:CE15.1175

⚠ Please change batteries
in secured environment

0 1 2 3

Sliding control switch provides rapid and accurate one-hand brightness adjustment.

0 - Standby Mode

1 - LOW

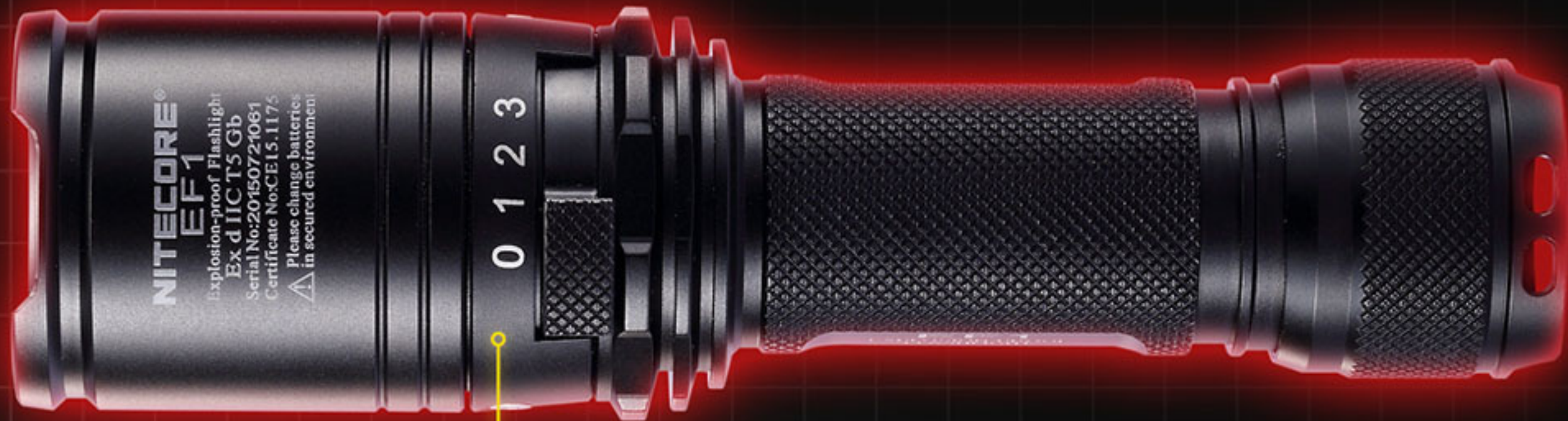
2 - MID

3 - HIGH

NITECORE®
EF1 EXPLOSION-PROOF FLASHLIGHT

NITECORE®

EF1 EXPLOSION-PROOF FLASHLIGHT



NITECORE®
EF1

Explosion-proof Flashlight

Ex d IIC T5 Gb

Serial No:20150721061

Certificate No:CE15.1175

⚠ Please change batteries
in secured environment

0 1 2 3



Advanced Temperature Regulation (ATR) technology enables dynamically adjustment to output performance according to body temperature.

NITECORE®

EF1 EXPLOSION-PROOF FLASHLIGHT



Robust HAIII military grade hard-anodized surface protects EF1's from corrossions in dampness, high temperature and other adverse environments.



NITECORE®

EF1 EXPLOSION-PROOF FLASHLIGHT

EF1 is powered by one 18650 Li-ion battery or two CR123 batteries.

NITECORE®
EF1 EXPLOSION-PROOF FLASHLIGHT



Dustproof and waterproof in accordance with **IP67**

NITECORE®
EF1 EXPLOSION-PROOF FLASHLIGHT

Head diameter

1.57"

Tail diameter

1.26"

Length








6"

Weight

8.82_{oz}
(without battery)



EFI SPEC.

FLI STANDARD	HIGH	MID	LOW
	830 Lumens	320 Lumens	4 Lumens
 18650 × 1	1 h 45 min	3 h	150 h
 CR123 × 2	1 h 30 min	2 h 45 min	60 h
	270m (Beam Distance)		
	18,300cd (Peak Beam Intensity)		
	1.5m (Impact Resistant)		
	IP67 (Dustproof And Waterproof)		

The stated data has been measured in accordance with the international flashlight testing standards ANSI/NEMA FL1, using 1 x Nitecore 18650 battery (3.7V, 2600mAh) or 2 x Nitecore CR123 batteries (3V, 1700mAh) under laboratory conditions. The data may vary in real-world use due to different battery use or environmental conditions.

NITECORE®
EFI EXPLOSION-PROOF FLASHLIGHT



Features

- Designed for hazardous industries including land and marine petroleum exploitation, petrochemical and chemical industries
- Constructed from aerospace grade aluminum alloy with distinctive 3mm body thickness
- Integrating a 10mm epoxy resin explosion-suppressive optical lens
- Type II Non-mine explosion-proof electrical appliance
- Class D explosion suppressive flashlight
- IIC explosion-proof grade
- Sliding control switch providing rapid and accurate one-hand brightness adjustment
- Featuring Advanced Temperature Regulation (ATR) technology to dynamically adjust output performance according to body temperature
- Utilizing a CREE XM-L2 U3 LED
- Powered by 1 x 18650 Li-ion battery for a maximum output up to 830 lumens
- High-efficiency regulation circuit providing unwavering output
- Robust HAIII military grade hard-anodized
- Waterproof in accordance with IP-67
- 1.5 meters impact resistance
- Tail stand capability