

NITECORE®

MH11

USB-C Rechargeable

Ultra Compact Flashlight



These images are for guide purpose only, actual result may vary depending on ambient factors.
They are the Intellectual property of Nitecore. All rights to take legal action are reserved.

NITECORE®

MH11 USB-C Rechargeable
Ultra Compact Flashlight 

All-Purpose Applicable



EDC (Everyday Carry)



Maintenance Checks



Emergency



Camping



Trekking

These images are for guide purpose only, actual result may vary depending on ambient factors.
They are the Intellectual property of Nitecore. All rights to take legal action are reserved.

NITECORE®

MH11 USB-C Rechargeable 
Ultra Compact Flashlight

Ultra Compact and Lightweight

Length: 128.3mm (5.05")



Tail Diameter:
24mm (0.95")

Weight: 60.5g (2.13oz) (Battery Not Included)



These images are for guide purpose only, actual result may vary depending on ambient factors.
They are the intellectual property of Nitecore. All rights to take legal action are reserved.

NITECORE®

MH11 USB-C Rechargeable 
Ultra Compact Flashlight

High Output

The CREE XP-L2 V6 LED is able to emit a max output of **1,000 lumens** with a lifespan of up to **50,000 hours**.

Long Throw

It can provide a max peak beam intensity of **9,150cd** and a max throw of **190 meters**.

Reliable

Powered by an 18650 battery and **USB-C rechargeable**, ideal for long term uses.

Versatile

The aero grade aluminum alloy offers excellent water and impact resistance with **IP68 rated** performance.

Note: The LED lifespan data is from the CREE official website.

These images are for guide purpose only, actual result may vary depending on ambient factors. They are the intellectual property of Nitecore. All rights to take legal action are reserved.

NITECORE®

MH11 USB-C Rechargeable 
Ultra Compact Flashlight

User-friendly One Button Interface



1000 Lumens

TURBO



230 Lumens

HIGH



50 Lumens

MID



3 Lumens

LOW



These images are for guide purpose only, actual result may vary depending on ambient factors.
They are the Intellectual property of Nitecore. All rights to take legal action are reserved.

NITECORE®

MH11 *USB-C Rechargeable* 
Ultra Compact Flashlight

USB-C 
Rechargeable

The built-in Li-ion battery charging circuit ensures a safe and fast charging process.

The charging port cover can provide excellent water, dust and impact resistance.



These images are for guide purpose only, actual result may vary depending on ambient factors. They are the intellectual property of Nitecore. All rights to take legal action are reserved.

NITECORE®

MH11 USB-C Rechargeable
Ultra Compact Flashlight



Powered by 1x18650 battery while compatible with 2xCR123 / RCRI23 batteries

**2,600mAh Rechargeable
Li-ion Battery Included (NL1826)**

* The MH11 is available to charge 18650 Li-ion batteries only.

These images are for guide purpose only, actual result may vary depending on ambient factors.
They are the intellectual property of Nitecore. All rights to take legal action are reserved.

NITECORE®

MH11 USB-C Rechargeable 
Ultra Compact Flashlight



250 Hours Ultra Long Runtime
Consistent Usage of 10 Days on LOW

(3 Lumens)

Note: The stated data is measured in accordance with the international flashlight testing standards ANSI/PLATO FL 1-2019, using 1x18650 Li-ion battery (2,600mAh) under laboratory conditions. The data may vary in real world use due to different battery usage or environmental conditions.

These images are for guide purpose only, actual result may vary depending on ambient factors. They are the intellectual property of Nitecore. All rights to take legal action are reserved.

NITECORE®

MH11 USB-C Rechargeable
Ultra Compact Flashlight 

ATR

(Advanced Temperature Regulation)
(Patent No. ZL201510534543.6)

The integrated ATR technology regulates the output of the MH11 according to the working condition and ambient environment to maintain the optimal performance.

These images are for guide purpose only, actual result may vary depending on ambient factors.
They are the intellectual property of Nitecore. All rights to take legal action are reserved.



NITECORE®

MH11 USB-C Rechargeable
Ultra Compact Flashlight 



Mechanical Polarity Reverse Protection

Designed to prevent accidental harm to the circuit and guarantee a long lifespan

These images are for guide purpose only, actual result may vary depending on ambient factors.
They are the Intellectual property of Nitecore. All rights to take legal action are reserved.

NITECORE®

MH11 USB-C Rechargeable 
Ultra Compact Flashlight

Memory Function

When reactivated, the flashlight will automatically access the previous memorized brightness level.



These images are for guide purpose only, actual result may vary depending on ambient factors.
They are the Intellectual property of Nitecore. All rights to take legal action are reserved.

NITECORE®

MH11 USB-C Rechargeable
Ultra Compact Flashlight 



Power Indicator

(Patent No. ZL201220057767.4)

When the light is on, the power indicator on the side is able to indicate the remaining battery power.

Flashing slowly indicates the power level is below **50%**.



Flashing quickly indicates the power level is below **10%**.



These images are for guide purpose only, actual result may vary depending on ambient factors. They are the intellectual property of Nitecore. All rights to take legal action are reserved.



NITECORE®



MH11 USB-C Rechargeable
Ultra Compact Flashlight

Customizable Optional Accessories



NFR23



NFG23



NFB23



NTW25

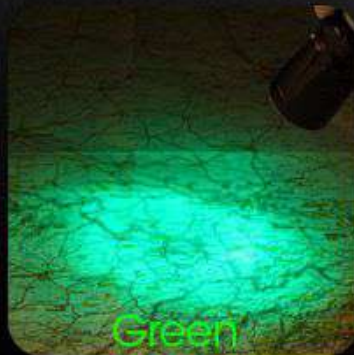


NDF25



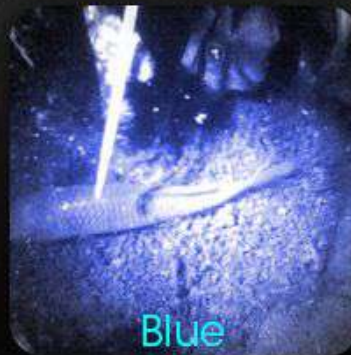
Red

Night Vision Protection



Green

Reading / Searching



Blue



Traffic Wand



Diffuser

These images are for guide purpose only, actual result may vary depending on ambient factors. They are the Intellectual property of Nitecore. All rights to take legal action are reserved.

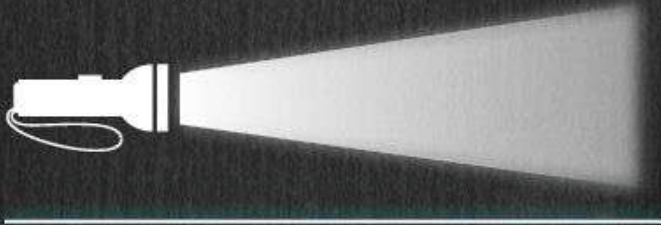
NITECORE®

MH11 USB-C Rechargeable
Ultra Compact Flashlight

Highly Efficient Constant Current Circuit (Non-PWM)

The constant brightness beam without flashing guarantees the comfortable visual experience.

Non-PWM



PWM



These images are for guide purpose only, actual result may vary depending on ambient factors.
They are the intellectual property of Nitecore. All rights to take legal action are reserved.

NITECORE®

MH11 USB-C Rechargeable
Ultra Compact Flashlight 



2m Waterproof and
Submersible

**All Weather Applicable
IP68 Rated**

1m Impact Resistant

These images are for guide purpose only; actual result may vary depending on ambient factors.
They are the Intellectual property of Nitecore. All rights to take legal action are reserved.

MH11 Technical Data

FL1 STANDARD	TURBO	HIGH	MID	LOW
	1,000 Lumens	230 Lumens	50 Lumens	3 Lumens
	2h 15min	4h 15min	20h 45min	250h
	190m	91m	40m	10m
	9,150cd	2,100cd	415cd	26cd
	1m (Impact Resistance)			
	IP68, 2m (Waterproof and Submersible)			

Note: The stated data is measured in accordance with the international flashlight testing standards ANSI/PLATO FL 1-2019, using 1x18650 Li-ion battery (2,600mAh) under laboratory conditions. The data may vary in real world use due to different battery usage or environmental conditions.



NITECORE®

MH11 USB-C Rechargeable
Ultra Compact Flashlight 

Features

- Utilizes a CREE XP-L2 V6 LED with a max output of 1,000 lumens
- Max peak beam intensity of 9,150cd and max throw of 190 meters
- An optical system combined with crystal coating and "Precision Digital Optics Technology" (PDOT)
- Highly efficient constant current circuit provides a stable output of up to 250 hours
- NITECORE 18650 Li-ion battery included (NL1826 2,600mAh)
- Intelligent Li-ion battery charging circuit with a USB-C port
- The tail switch controls 4 brightness levels
- A power indicator on the side indicates the remaining battery power (Patent No. ZL201220057767.4)
- Incorporated Advanced Temperature Regulation (ATR) module (Patent No. ZL201510534543.6)
- Optical lenses with double-sided scratch resistant coating
- Constructed from aero grade aluminum alloy
- HA III military grade hard-anodized finish
- Waterproof and dustproof rating in accordance with IP68 (2 meters submersible)
- Impact resistant to 1 meter
- Tail stand capability



These images are for guide purpose only, actual result may vary depending on ambient factors.
They are the Intellectual property of Nitecore. All rights to take legal action are reserved.

NITECORE®

MH11 USB-C Rechargeable
Ultra Compact Flashlight

Packing List

Included



MH11 Flashlight



NL1826 Battery



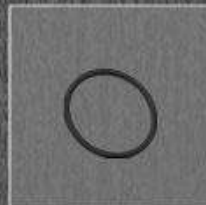
USB-C
Charging Cable



Holster



Lanyard



Spare O-ring



Clip

Package Dimensions: 145mm×80mm×50mm (5.71"×3.15"×1.97")

Package Weight: 200g (7.05oz)



These images are for guide purpose only; actual result may vary depending on ambient factors.
They are the Intellectual property of Nitecore. All rights to take legal action are reserved.