



MT06MD

Designed for **Medical Personnel**
and **First Responders**

- **High CRI Output (CRI \geq 90):** Reveals every detail on objects
- **Photobiologically Safe (RG0):** Exempted from blue light hazard
- **Default Low Mode Setting:** Suitable for pupil inspection

These images are for guide purpose only, actual result may vary depending on ambient factors. They are the intellectual property of Nitecore. All rights to take legal action are reserved.

Packing list

- MT06MD × 1
- Spare o-ring × 1
- User Manual × 1
- Warranty card × 1

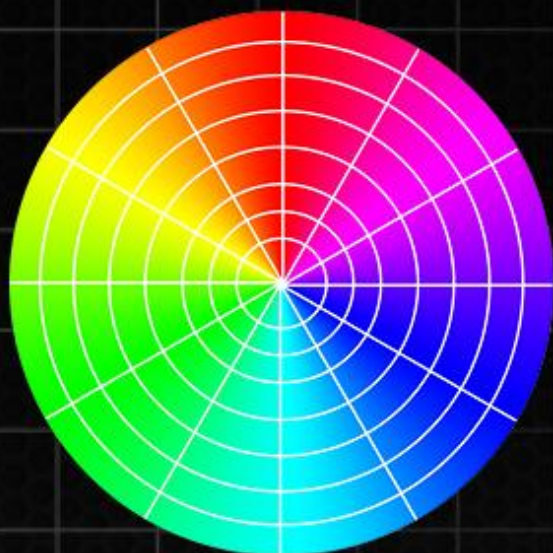


These images are for guide purpose only, actual result may vary depending on ambient factors. They are the intellectual property of Nitecore. All rights to take legal action are reserved.

Extreme color rendering capability revealing every detail on objects

The MT06MD utilizes a high color rendering (CRI ≥ 90) Nichia 219B LED outputting light profile resembling the nature of sunlight, thus allowing medical personnel and first responders to see every detail of the object and helping them to make an accurate diagnose.





HIGH CRI LED
CRI Value ≥ 90



REGULAR LED
CRI Value 70

Color rendering index (CRI)

The color rendering index (CRI) is a quantitative measure of the ability of a light source to reveal the colors of various objects faithfully in comparison with an ideal or nature light source. The higher the CRI becomes, the more likely it is to restore objects in their original colors. Numerically, the highest possible CRI value is 100, and would only be given to a light source identical to sunlight.

Photobiologically safe (RG0) Eliminating blue-light hazard

The Nichia 219B LED is rated at RG0 in accordance with the IEC/EN62471 photobiological safety standards, thus eliminating the potential of optical safety issues like the blue-light hazard.

*The blue-light hazard refers to the fact that direct blue light exposure to the human eye may cause photochemical damage to the retina, resulting in blurry vision, cataract and maculopathy etc.



These images are for guide purpose only, actual result may vary depending on ambient factors. They are the intellectual property of Nitecore. All rights to take legal action are reserved.

Default low mode setting Ideal for pupil inspection

The MT06MD always turns on in the low mode at 4 lumens.
Such smooth lighting is ideal for inspecting the pupils.



These images are for guide purpose only, actual result may vary depending on ambient factors. They are the intellectual property of Nitecore. All rights to take legal action are reserved.

Multiple bright modes for spotting body injuries

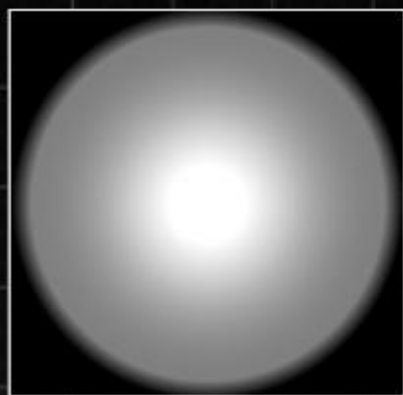
Apart from the low mode, there are also two brighter modes available: mid at 45 lumens and high at 180 lumens. They are designed for emergency medical personnel or first responders to spot body injuries or open wounds.



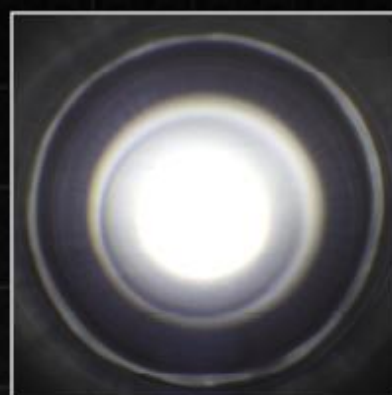
These images are for guide purpose only, actual result may vary depending on ambient factors. They are the intellectual property of Nitecore. All rights to take legal action are reserved.

Neutral white (5000K) uniform spot reducing chances of misdiagnose

The high CRI Nichia 219B LED, housed in a PDOT smooth reflector, produces a uniform and smooth spot with no artifacts, reducing the chances of misdiagnose.



MT06MD



A REGULAR LIGHT



These images are for guide purpose only, actual result may vary depending on ambient factors. They are the intellectual property of Nitecore. All rights to take legal action are reserved.

Extremely lightweight and portable

The streamlined MT06MD, weighing just **0.78oz**, is extremely lightweight. Comes with a stainless steel clip, it can be easily carried in the pocket.

5.04" (128mm)



Constant current regulation circuit (Non-PWM)
allows for consistent output with no flickering
and reduces eye strain thusly.

Efficiency: 0.90973 - 49
Min: 0.050008 cd, Max: 22808 cd/l

These images are for guide purpose only, actual result may vary depending on ambient factors. They are the intellectual property of Nitecore. All rights to take legal action are reserved.

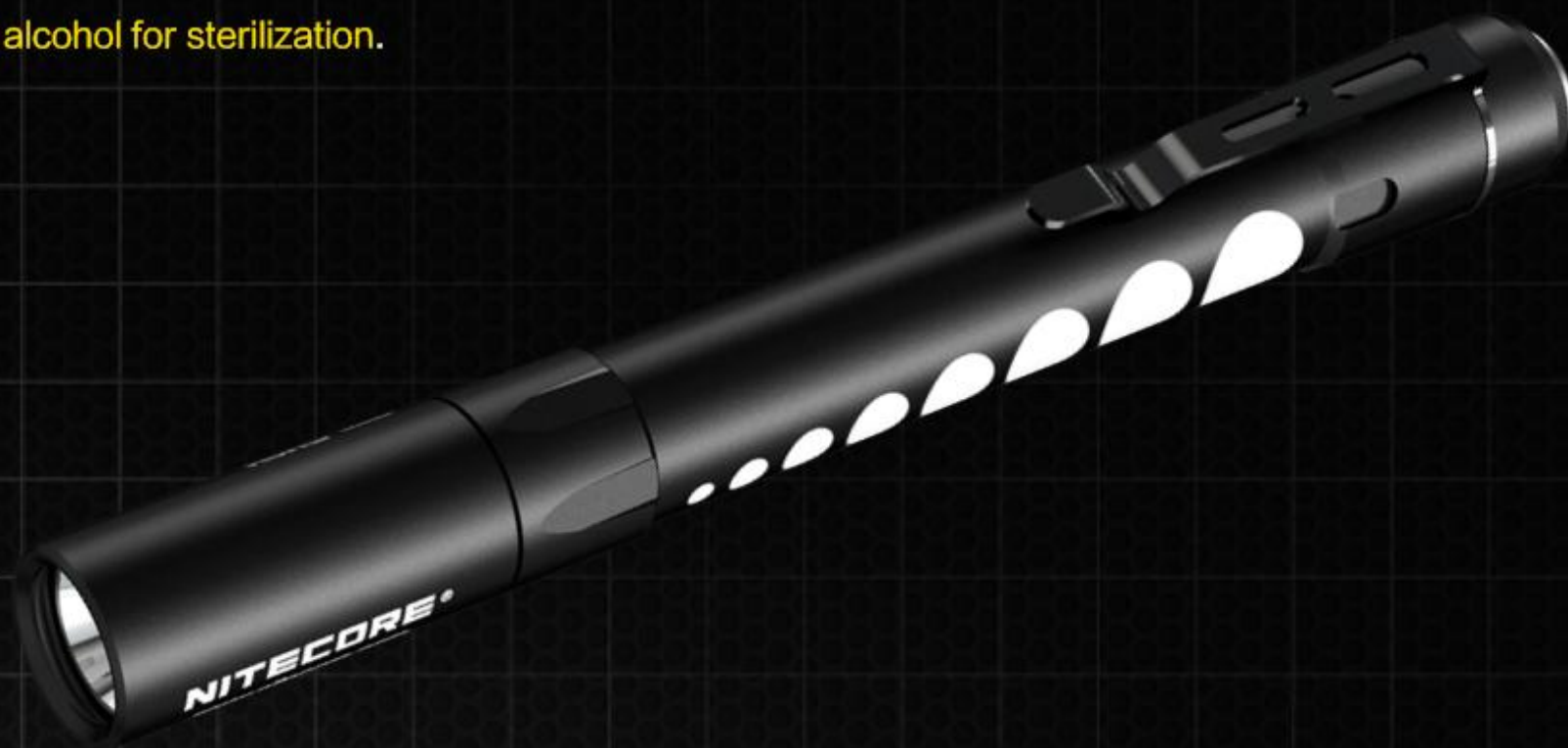
Utilizing two AAA batteries, the MT06MD has **200%** the electric energy of similar products on the market. With extensive runtime of 35 hours, it easily copes with situations where long lasting illumination is needed.



*The trademarked products appear in this image belong to their lawful owner. All items in this image are for guide purpose only.

These images are for guide purpose only, actual result may vary depending on ambient factors. They are the intellectual property of Nitecore. All rights to take legal action are reserved.

Made from hard-anodized aero grade aluminum alloy, the MT06MD has a full metal surface that is **submersible in alcohol for sterilization.**









These images are for guide purpose only, actual result may vary depending on ambient factors. They are the intellectual property of Nitecore. All rights to take legal action are reserved.

**Waterproof in accordance with IPX8
(2 meters submersible)**



These images are for guide purpose only, actual result may vary depending on ambient factors. They are the intellectual property of Nitecore. All rights to take legal action are reserved.

MT06MD SPEC.

FLI STANDARD	HIGH	MID	LOW
	180 LUMENS	45 LUMENS	4 LUMENS
	45 min	5 h 15 min	35 h
	58m	28m	11m
	860cd	194cd	30cd
	1m (Impact Resistant)		
	IPX8, 2m (Waterproof AND Submersible)		

NOTICE: The above data has been measured in accordance with the international flashlight testing standards ANSI/ NEMA FL1 using 2 x 1.2 V 750mAh AAA batteries under laboratory conditions. The data may vary slightly during real-world use due to battery type, individual usage habits and environmental factors.



Features

- Purpose-designed medical inspection light
- Utilises a Nichia 219B LED (CRI ≥ 90), max output of 180 lumens
- Photobiologically safe (RG0), colour temperature CCT=5000K
- Turns on in "low" by default, convenience and ideal for pupil inspections
- Powered by 2 x AAA batteries, max runtime up to 35 hours
- 3 brightness levels available
- Reverse clicky tail switch provides easy one-handed operation
- High efficiency constant current circuit provides stable and consistent output
- Stainless steel clip
- Aerospace grade aluminium alloy construction
- HAIII hard anodising
- IPX8 (2 meters submersible)
- Suitable for alcohol sterilisation
- Impact resistant to 1 meter



These images are for guide purpose only, actual result may vary depending on ambient factors. They are the intellectual property of Nitecore. All rights to take legal action are reserved.

Packing list

- MT06MD × 1
- Spare o-ring × 1
- User Manual × 1
- Warranty card × 1



These images are for guide purpose only, actual result may vary depending on ambient factors. They are the intellectual property of Nitecore. All rights to take legal action are reserved.