

NITECORE®

GEN2

NB10000

ULTRA LIGHTWEIGHT
CARBON FIBER ENERGY BRICK

The World's Most Compact and Lightest
10,000mAh Mobile Power



Specially Designed
for Trail Running



NITECORE®

NB10000 GEN2 ULTRA LIGHTWEIGHT
CARBON FIBER ENERGY BRICK

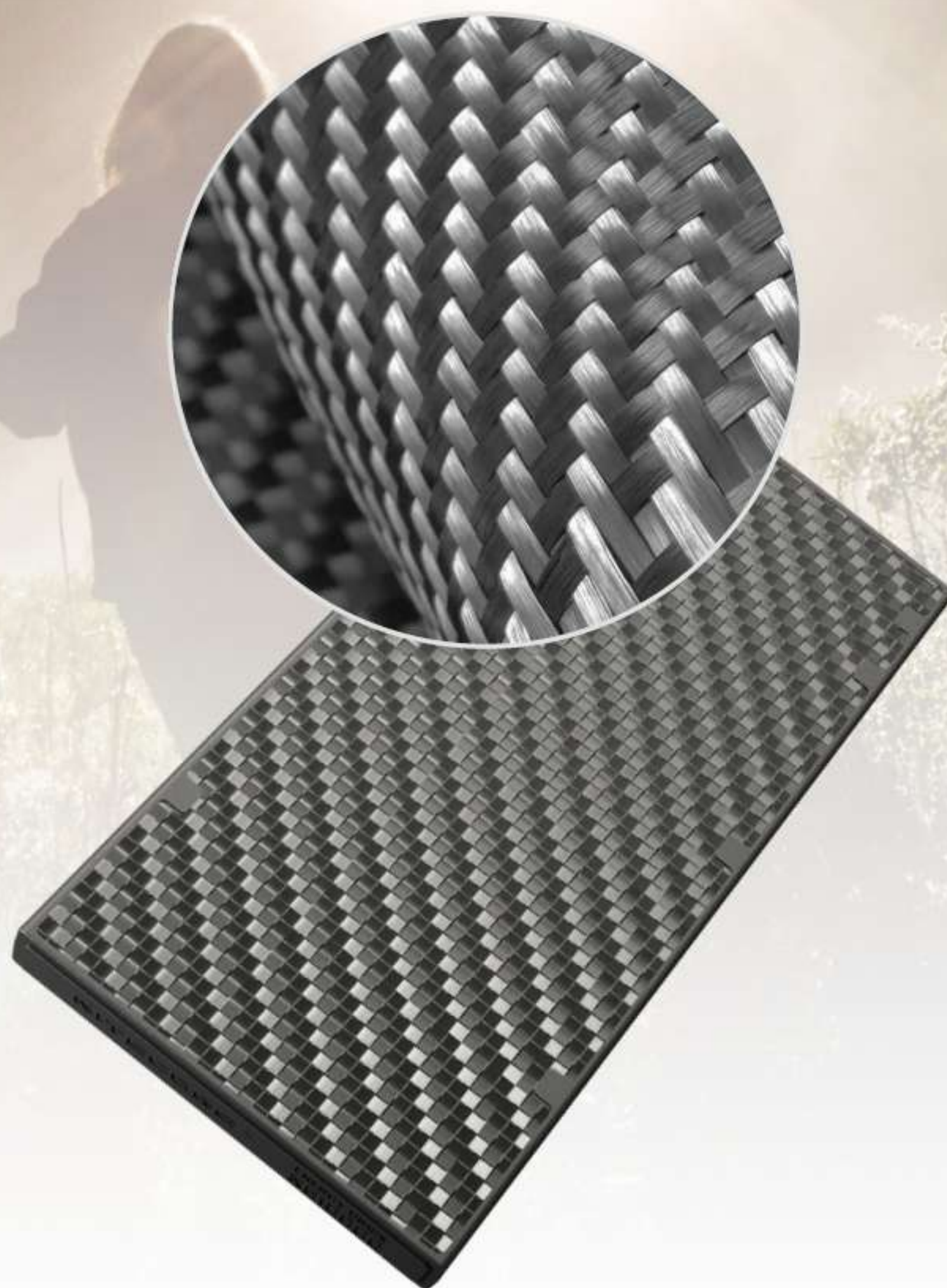


Carbon Fiber Reinforced Polymer (CFRP) Constructed Frame

Widely used in aerospace and automotive engineering, the CFRP features ultra lightweight and high strength, designed to achieve an excellent impact resistance and ideal to protect the cell.

Carbon Fiber Sheets

The carbon fiber sheets made by compression molding are selected to stabilize the cell and guarantee a safe usage.



NITECORE®

NB10000

**GEN2 ULTRA LIGHTWEIGHT
CARBON FIBER ENERGY BRICK**

Only 150g (5.29oz) Ultra Lightweight

-40%

Lighter Than Conventional 10,000mAh Power Banks



*Data from chongdiantou.com

*Note: The weight of the actual products may vary slightly.

This picture is the intellectual property of Nitecore. All rights to take legal action are reserved.



Safe and Reliable

Globally insured and multiple global
certifications approved



NITECORE®

NB10000

GEN2 ULTRA LIGHTWEIGHT
CARBON FIBER ENERGY BRICK

IPX5 Rating
Fearless of the rainy or snowy weather

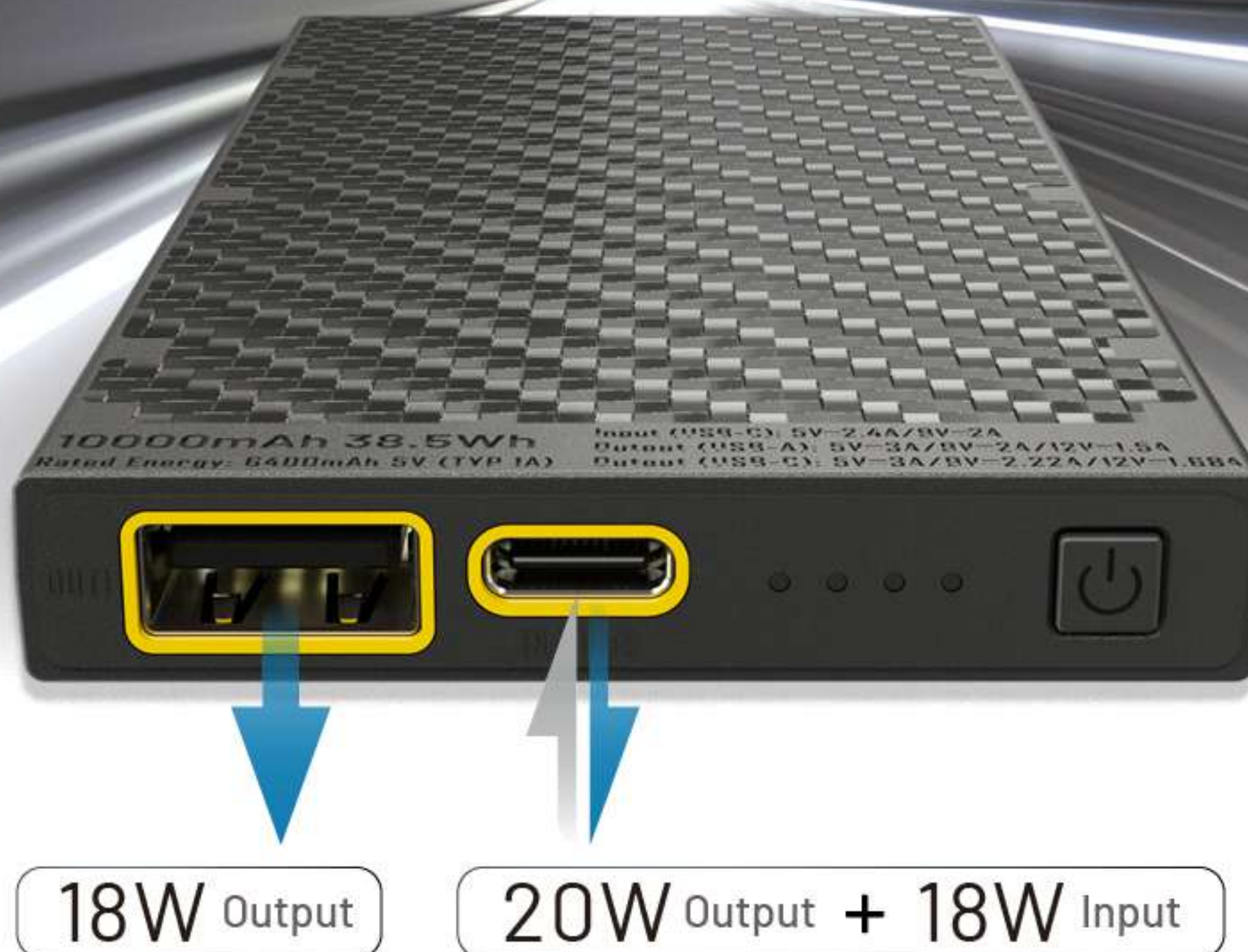


This picture is the intellectual property of Nitecore. All rights to take legal action are reserved.

NITECORE®

NB10000

GEN2 **ULTRA LIGHTWEIGHT**
CARBON FIBER ENERGY BRICK



Two-way PD + QC 3.0 Output and More

The universal USB-A + USB-C design makes the charging process incredibly convenient.



Multiple Protection Safeguards

Available to be used in temperature between -10~40°C (14~104°F)



Overcurrent
Protection



Short-Circuit
Protection



Over-discharge
Protection



Overcharge
Protection



Overvoltage
Protection



Thermal
Protection

Airline Approved Power

In accord with the UN38.3 Standard with a rated capacity less than 100Wh, the NB10000 can be your best worry-free power companion while on the move.



Exquisite Design with Simplicity

The all black combination of the sandblasted frame
and hi-tech texture offers an anti-slide grip with
great comfort.



Specifications

Cell: Li-ion

Capacity: 10,000mAh 3.85V (38.5Wh)

Rated Energy: 6,400mAh 5V (TYP 1A)

Input: USB-C: 5V=2.4A / 9V=2A

Output: USB-C: 5V=3A / 9V=2.22A / 12V=1.68A

USB-A: 5V=3A / 9V=2A / 12V=1.5A

Dual Ports: 5V=3A (MAX)

Dimensions: 121.9mm × 59mm × 10.6mm
(4.8" × 2.32" × 0.42")

Weight: 150g±3g (5.29oz±0.11oz)

Accessories: USB Charging Cable (USB-A to USB-C)

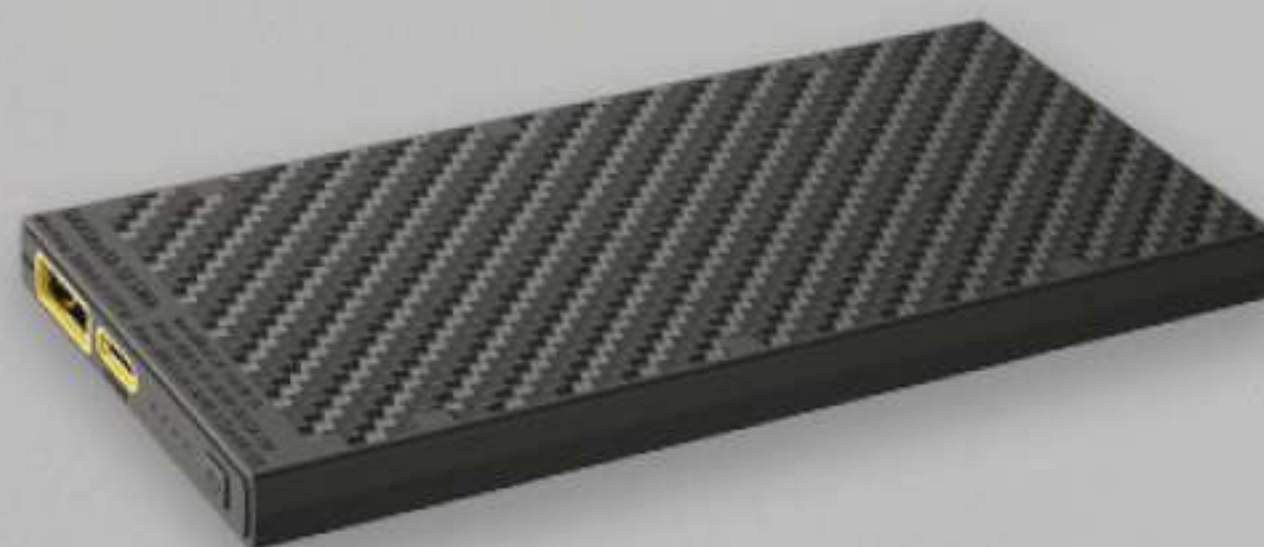
*Note: The weight of the actual products may vary slightly.



NITECORE®

NB10000

**GEN2 ULTRA LIGHTWEIGHT
CARBON FIBER ENERGY BRICK**



18 + 15

Months
Free Warranty

Days
Free Replacement

Package Contents

Package Dimensions: 92mm x 153mm x 28mm (3.62" x 6.02" x 1.10")

Package Weight: 250g (8.82 oz)



Worldwide Media Coverage

The NITECORE NB10000, our first Carbon Fiber Energy Brick of the NB Series, has gained in popularity among the outdoor and tech communities.

The logo for HICONSUMPTION, featuring the word "HICONSUMPTION" in a bold, black, sans-serif font. The "H" is stylized with a red horizontal bar.

Digital Lifestyle Magazine for Men

The logo for TRENDHUNTER, featuring the word "TRENDHUNTER" in a bold, black, sans-serif font. Below it, the tagline "FIND BETTER IDEAS. FASTER" is written in a smaller, black, sans-serif font.

The #1 Largest Trends, Innovation and Trend Spotting Community

The logo for GEAR SHOUT, featuring a yellow gear icon with a flame inside, followed by the words "GEAR SHOUT" in a bold, black, sans-serif font.

Russian Military and Sports Equipment News and Reviews

The logo for NEW ATLAS, featuring the words "NEW ATLAS" in a bold, blue, sans-serif font.

New Technology & Science News

The logo for "as", featuring the letters "as" in a stylized, red, lowercase font.

Spanish Online Sports Newspaper

The logo for TECHABLE, featuring the word "TECHABLE" in a bold, black, sans-serif font.

Japanese Overseas / Domestic Net Venture News Site

Ultra Slim Body

As an ultra thin 10,000mAh power bank, the NB10000 is second to none.



*Data from NITECORE Lab

This picture is the intellectual property of Nitecore. All rights to take legal action are reserved.

NITECORE®

NB10000

**GEN2 ULTRA LIGHTWEIGHT
CARBON FIBER ENERGY BRICK**

Ultra Compact

-50%

Smaller Than Conventional 10,000mAh Power Banks



Dimensions: 121.9mm × 59mm × 10.6mm (4.8" × 2.32" × 0.42")

*Data from NITECORE Lab

This picture is the intellectual property of Nitecore. All rights to take legal action are reserved.

Outstanding Energy Density

+22%



Higher Than Conventional 18650 Li-ion Batteries
Energy Density of NB10000:

257mWh/g



* Energy Density of an 18650 Li-ion Battery: 210mWh/g (3,500mAh, 3.6V)

* Energy Density Formula:

Mass Energy Density = $\frac{\text{Battery Capacity} \times \text{Battery Voltage}}{\text{Overall Weight of NB10000}}$

* Overall Weight of NB10000: 150g±3g (5.29oz±0.11oz)

This picture is the intellectual property of Nitecore. All rights to take legal action are reserved.

NITECORE®

NB10000 GEN2 ULTRA LIGHTWEIGHT
CARBON FIBER ENERGY BRICK

10000 mAh



Sufficient power for smartphones, GPS, headlamps, headphones
and more even in 100km or 100-mile trail races



iPhone 13 Pro **2** Charges



Huawei P50 **1.5** Charges



Headlamp **4.5** Charges
(NITECORE UT27)



Li-ion Battery **1.5** Charges
(NITECORE NL1835R)

*Data from NITECORE Lab

This picture is the intellectual property of Nitecore. All rights to take legal action are reserved.

Power Level Display

The 3 blue indicators can display the charging status and the power level.



Mode Button

Status of Indicators	Power Level
●●● 3 Constant-on:	Approx. 100%
●● 2 Constant-on:	Approx. 70%
● 1 Constant-on:	Approx. 30%
●●● 1 Flashing:	Nearly Depleted (Please get recharged as soon as possible)

Low Current Mode Available

Press and hold the Mode Button to turn on the white indicator and access Low Current Mode. Suitable for charging low current devices including wireless headphones, wearables and more.



Low Current Mode Indicator